

# MILLING PROMOTION

HIGH-FEED // DOUBLE-SIDED

VAPOR™

DNT-2024-10

# DAPRA®

WORKHOLDING • INDEXABLE MILLING • POWER TOOLS



## SAVE BIG on Our Latest High-Feed Tooling!

Upgrade to VAPOR™ for **FREE** with insert purchase.

### VAPOR™ High-Feed Mills

- › TRI-X2™ double-sided, six-edged insert
- › Extreme metal removal rates
- › Reduced vibration tendencies



### SKEPTICAL?

Make us PROVE the value. Challenge us to show you how VAPOR™ can increase your profitability. Scan the QR to initiate the challenge or visit [dapra.com/VAPapp](https://dapra.com/VAPapp).



## FREE END MILL or MODULAR HEAD

- up to 3/4" OD when you buy 50 inserts\*
- 1"+ OD when you buy 70 inserts\*

Use promo code **PRO-HF2024**.

*\* You may mix-and-match edge types and coatings. Pertains to double-sided VAPOR High-Feed family products only.*

*Promo ends 10/31/2024. Subject to change without notice.*

*See [dapra.com/promos](https://dapra.com/promos) for additional terms.*

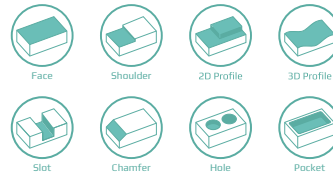
## FREE SHELL MILL

- when you buy 10 inserts per pocket\*



Download our VAPOR catalog for full specifications, speeds and feeds and more.

[dapra.com/VAPcat](https://dapra.com/VAPcat)



DAPRA NEXT TECHNOLOGY

[www.DAPRA.COM/PROMOS](https://www.DAPRA.COM/PROMOS)

(800) 243-3344

[info@dapra.com](mailto:info@dapra.com)

# MILLING PROMOTION

HIGH-FEED // DOUBLE-SIDED

VAPOR™

DNT-2024-10

# DAPRA®

WORKHOLDING • INDEXABLE MILLING • POWER TOOLS



## VAPOR™ HIGH-FEED INDEXABLE TOOLING

### CUTTER BODIES



**END MILLS**  
1/2" - 1 1/2"

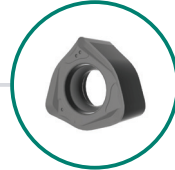


**SHELL MILLS**  
1 1/2" - 2"



**MODULAR HEADS**  
3/4" - 1 1/4"

### DOUBLE-SIDED INSERTS



**6MM IC**



Download our VAPOR catalog for full specifications, speeds and feeds and more.  
[dapra.com/VAPcat](http://dapra.com/VAPcat)

### CUTTER BODY PART NUMBERING:

## DTMSM150-050-R2-6C

| PLATFORM           | TOOL TYPE                        | OD           | TOOL SPECIFIC   | SERIES   | # OF FLUTES                   |
|--------------------|----------------------------------|--------------|---|----------|-------------------------------|
| DTM = Double-Sided | SM = Shell Mill<br>EM = End Mill | 150 = 1.500" | Shell Mill = Arbor Dia.<br>End Mill = Effective Length<br>MOD = Modular | R2 = 6mm | "C" denotes coolant thru tool |

### INSERT PART NUMBERING:

## DTM-06-D-DMM25-IN

| PLATFORM           | SIZE (MM IC) | EDGE TYPE                    | GRADE | COATING |
|--------------------|--------------|------------------------------|-------|---------|
| DTM = Double-Sided |              | D = High-Shear<br>T = T-Land |       |         |

### 6mm Series Cutter Bodies

| Type          | EDP   | Description        | OD     | Min. Insert Purchase Required | List Price      |
|---------------|-------|--------------------|--------|-------------------------------|-----------------|
| End Mills     | 72000 | DTMEM050-150-R2-1C | 0.500" | 50                            | <b>\$186.39</b> |
|               | 72005 | DTMEM050-250-R2-1C | 0.500" | 50                            | <b>\$206.70</b> |
|               | 72010 | DTMEM063-200-R2-2C | 0.625" | 50                            | <b>\$207.70</b> |
|               | 72015 | DTMEM063-300-R2-2C | 0.625" | 50                            | <b>\$233.09</b> |
|               | 72020 | DTMEM075-200-R2-3C | 0.750" | 50                            | <b>\$251.86</b> |
|               | 72025 | DTMEM075-300-R2-3C | 0.750" | 50                            | <b>\$274.72</b> |
|               | 72030 | DTMEM100-250-R2-4C | 1.000" | 70                            | <b>\$318.88</b> |
|               | 72040 | DTMEM100-250-R2-5C | 1.000" | 70                            | <b>\$335.11</b> |
|               | 72045 | DTMEM100-450-R2-5C | 1.000" | 70                            | <b>\$352.89</b> |
|               | 72050 | DTMEM125-300-R2-5C | 1.250" | 70                            | <b>\$347.81</b> |
|               | 72060 | DTMEM150-350-R2-6C | 1.500" | 70                            | <b>\$394.51</b> |
|               | 72065 | DTMEM150-550-R2-6C | 1.500" | 70                            | <b>\$440.23</b> |
| Shell Mills   | 72100 | DTMSM150-050-R2-6C | 1.500" | 60                            | <b>\$440.23</b> |
|               | 72105 | DTMSM200-075-R2-7C | 2.000" | 70                            | <b>\$545.35</b> |
| Modular Heads | 72200 | DTMEM075-MOD-R2-3C | 0.750" | 50                            | <b>\$289.96</b> |
|               | 72205 | DTMEM100-MOD-R2-4C | 1.000" | 70                            | <b>\$349.36</b> |
|               | 72206 | DTMEM100-MOD-R2-5C | 1.000" | 70                            | <b>\$378.29</b> |
|               | 72210 | DTMEM125-MOD-R2-5C | 1.250" | 70                            | <b>\$396.06</b> |

**PROMO SAVINGS**

### 6mm Series Inserts

| EDP      | Description        | List Price |
|----------|--------------------|------------|
| 11000055 | DTM-06-D-DMM25-IN  | \$14.90    |
| 74185    | DTM-06-T-DMK30-HM  | \$14.70    |
| 74085    | DTM-06-T-DMK15-HM  | \$14.70    |
| 74285    | DTM-06-T-DMP25-HM  | \$14.70    |
| 74160    | DTM-06-T-DMK30-GLH | \$14.93    |
| 74060    | DTM-06-T-DMK15-GLH | \$14.93    |
| 11000054 | DTM-06-D-DMM25-UHT | \$15.20    |
| 74260    | DTM-06-T-DMP25-GLH | \$14.93    |

Promo ends 10/31/2024.  
Subject to change without notice.

See [dapra.com/promos](http://dapra.com/promos) for additional terms.